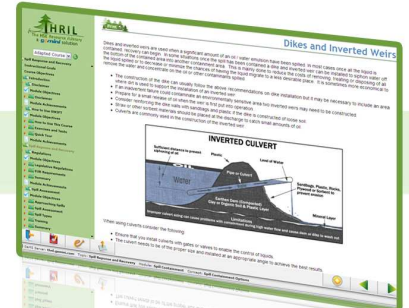
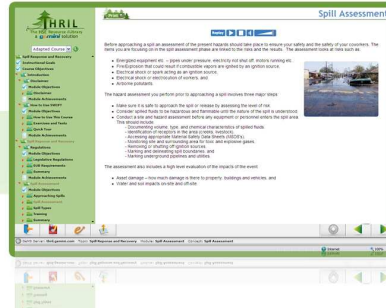




The HSE Resource Library

# Spill Response and Recovery

Online!



The commitment to safe work practices is imperative to avoid spills that can affect the public and the environment. Worker safety standards must be ensured so all potential hazards are addressed and can be reduced or eliminated to both avoid spills and contain them if they occur. This course has been designed to help you meet all regulatory and government requirements including the Alberta Occupational Health and Safety Code.

This **one-hour** course is part of the THRIL certificate program series, developed by Gemini and well-known, highly respected industry professionals. THRIL certificates are designed to easily and inexpensively obtain essential training that leads towards recognized certification and qualifies for compulsory certification maintenance points to preserve ROH and CRSP designations. University of Calgary students completing a total of 45 hours or more training will be credited 30 hours of elective course credit toward the U of C Health, Safety and Environmental Certificate program.

### On completion of this course you will be able to:

- Follow the reporting procedures that are required when there is a spill,
- Initiate spill containment procedures,
- Describe and apply the spill management regulations that are relevant to different situations,
- Describe the regulatory reporting requirements for spill response and recovery,
- List all safety concerns relating to a specific spill event,
- Determine the level of risk posed by a spill,
- Describe the rationale behind internal and external reporting requirements,
- Recognize your responsibility to safe work practices,
- List the commitments and objectives relating to spill management,
- Describe spill prevention, and
- Explain the importance of timely responses in minimizing spill impacts.

THRIL assessments are also available for all THRIL courses ideal for learners that wish to challenge the course for recertification purposes.

